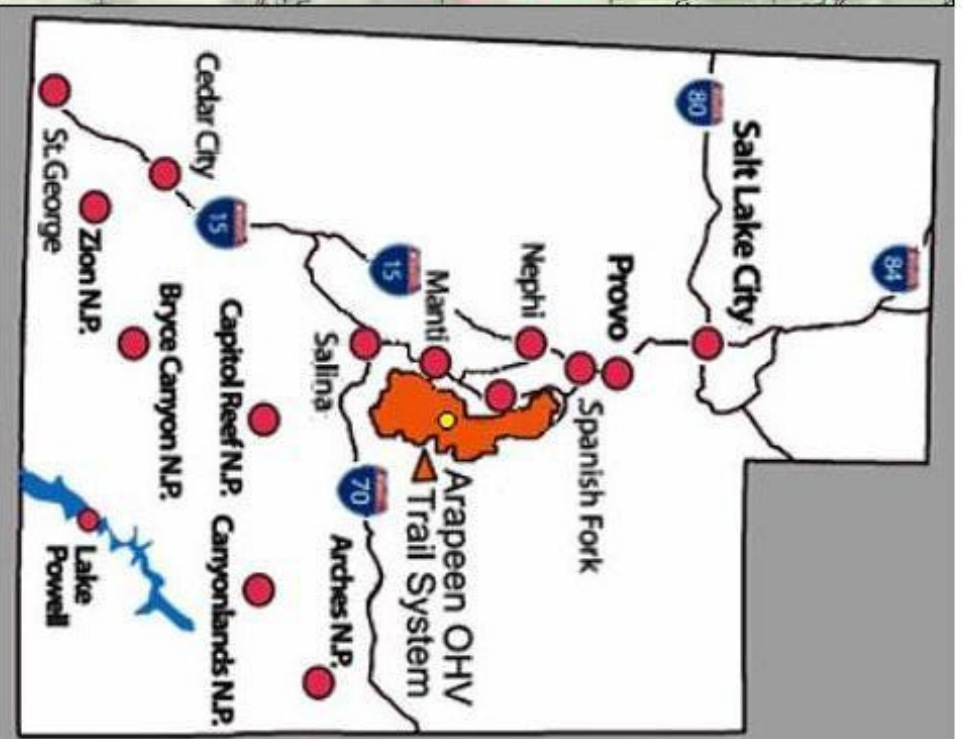
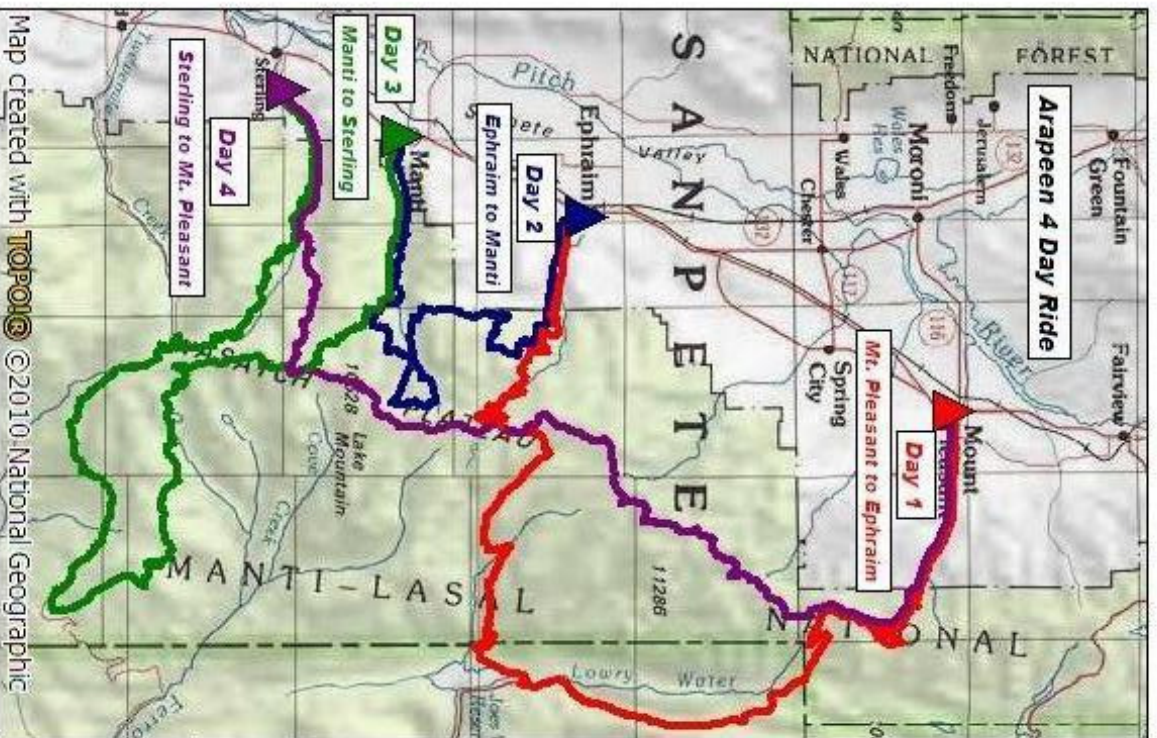


# Arapdeen Trail 4-Day Circuit Ride



# ARAPDEEN

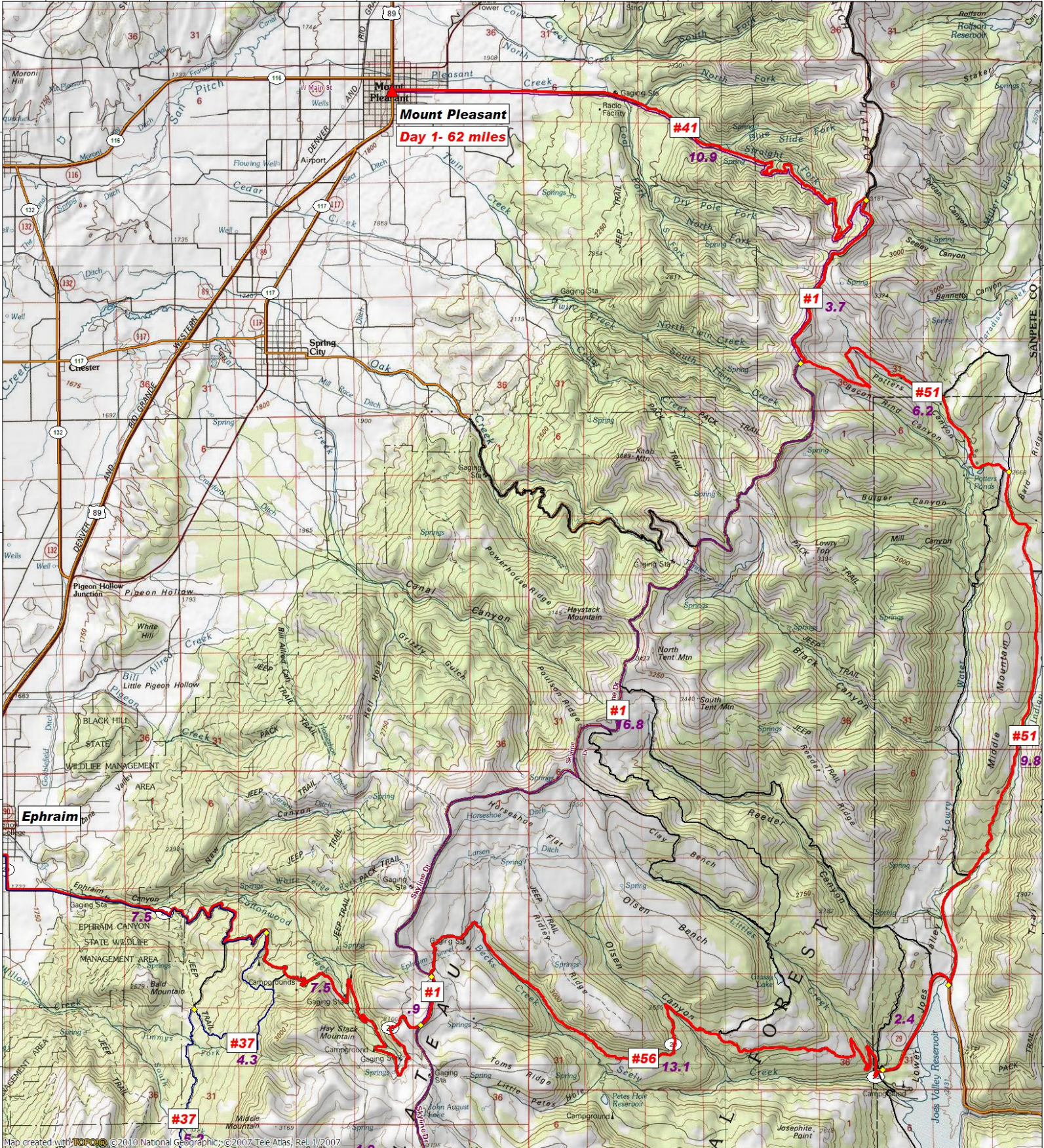
OHV TRAIL

WWW.SANPETE.COM

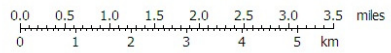


Day 1: Mt. Pleasant to Ephraim

111.56667° W 111.53333° W 111.50000° W 111.46667° W 111.43333° W 111.40000° W 111.36667° W 111.33333° W 111.30000° W WGS84 111.25000° W

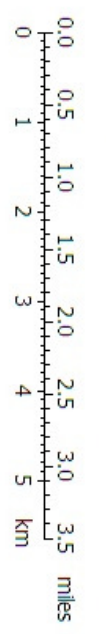
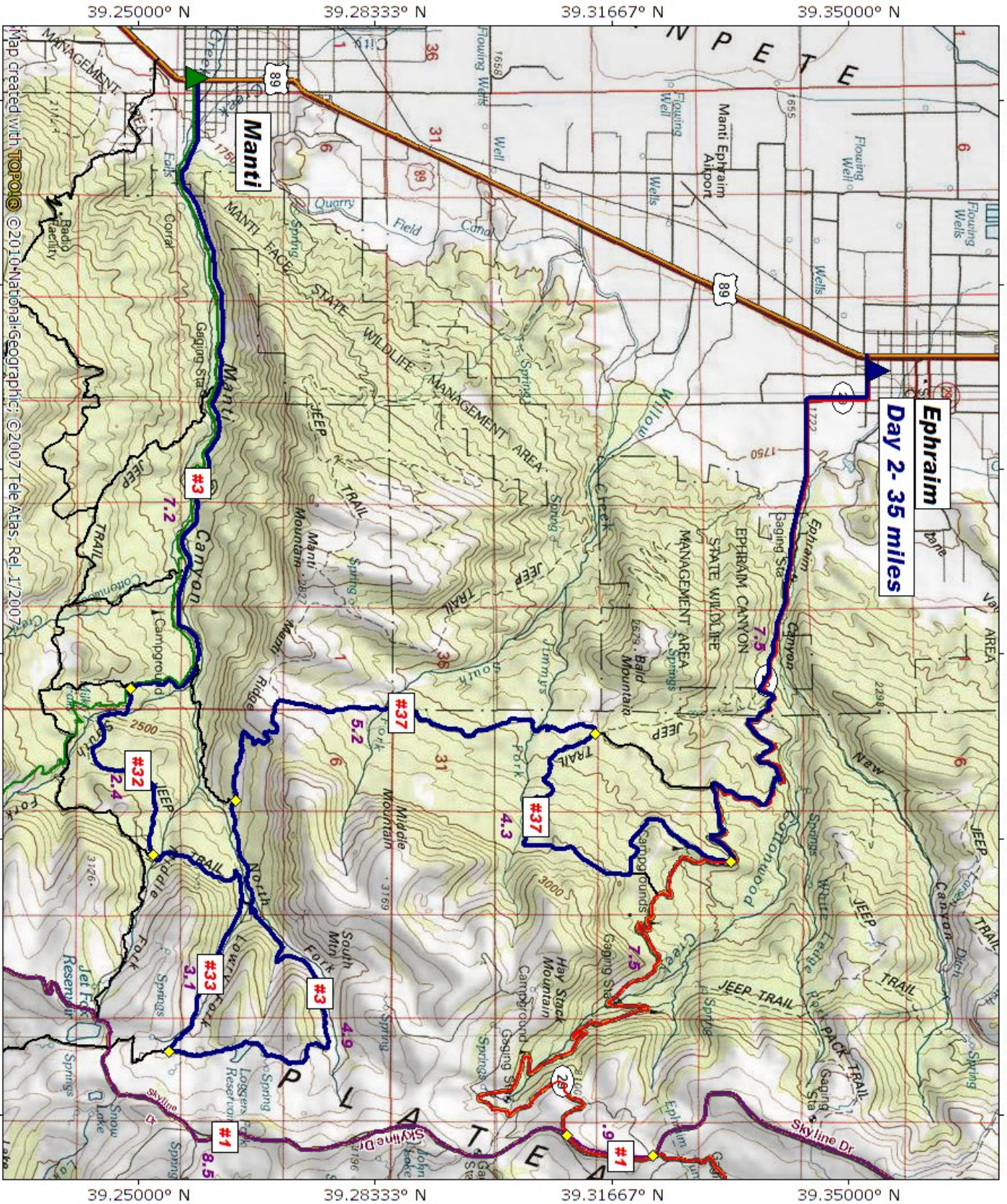


Map created with **TOPOGIS** © 2010 National Geographic; © 2007 Tele Atlas; Rel. 1/2007





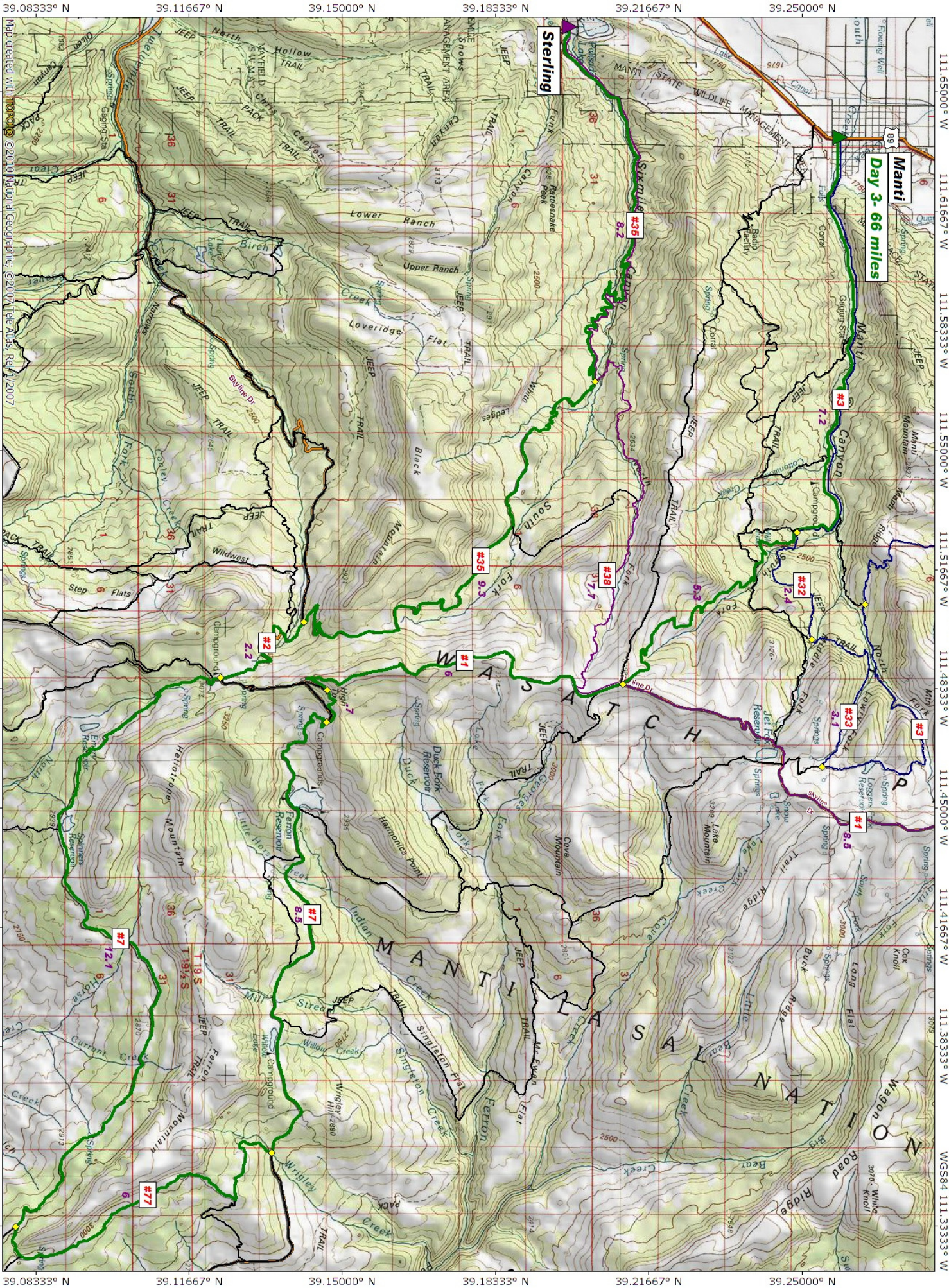
# Day 2: Ephraim to Manti



08/01/11  
117°  
TN / MN

Map created with **Topo!** ©2010 National Geographic ©2007 Tele Atlas, Rel. 1/2007  
39.25000° N 39.28333° N 39.31667° N 39.35000° N  
111.63333° W 111.60000° W 111.56667° W 111.53333° W 111.50000° W 111.45000° W  
WGSS84 111.45000° W



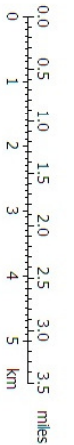


Day 3- 66 miles

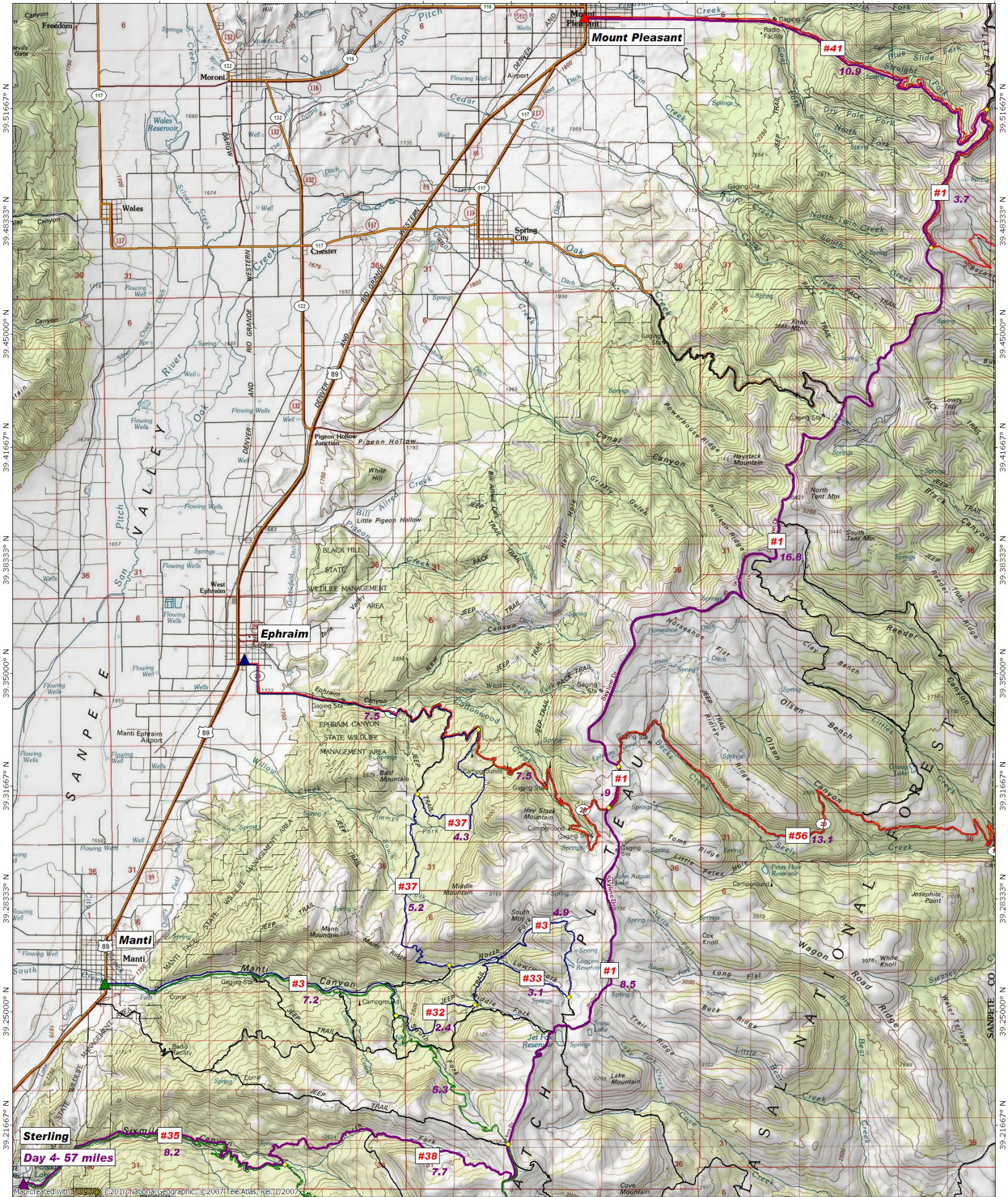
Sterling

111.65000° W  
111.61667° W  
111.58333° W  
111.55000° W  
111.51667° W  
111.48333° W  
111.45000° W  
111.41667° W  
111.38333° W  
111.35000° W

39.08333° N  
39.11667° N  
39.15000° N  
39.18333° N  
39.21667° N  
39.25000° N







Map created with TopoZone ©2010 National Geographic, ©2007 The Atlas Rel. 1/2007

