

Log- Maple Canyon Loop, Elevation 9,336'

111.71667° W

111.68333° W

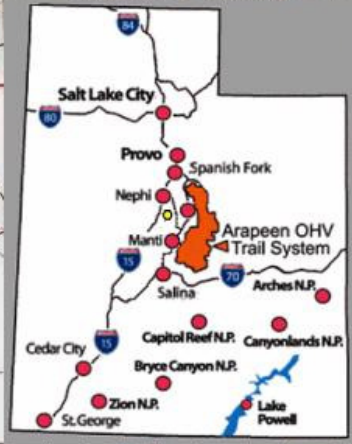
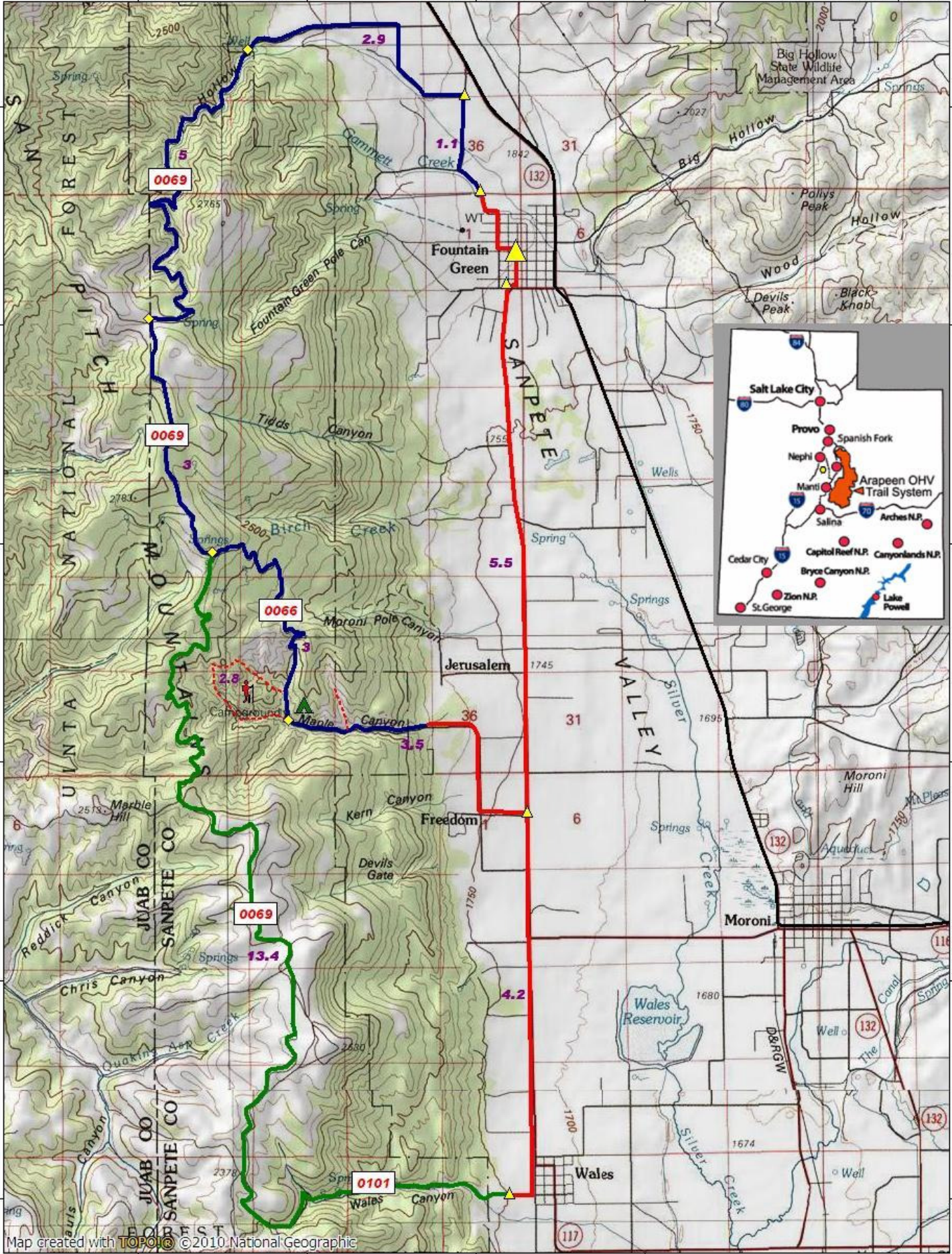
111.65000° W

111.61667° W

WGS84 111.56667° W

39.65000° N
39.61667° N
39.58333° N
39.55000° N
39.51667° N
39.48333° N

39.65000° N
39.61667° N
39.58333° N
39.55000° N
39.51667° N
39.48333° N



Map created with **TOPOLIST** © 2010 National Geographic

111.71667° W

111.68333° W

111.65000° W

111.61667° W

WGS84 111.56667° W

