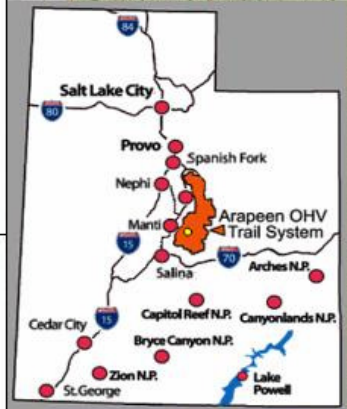
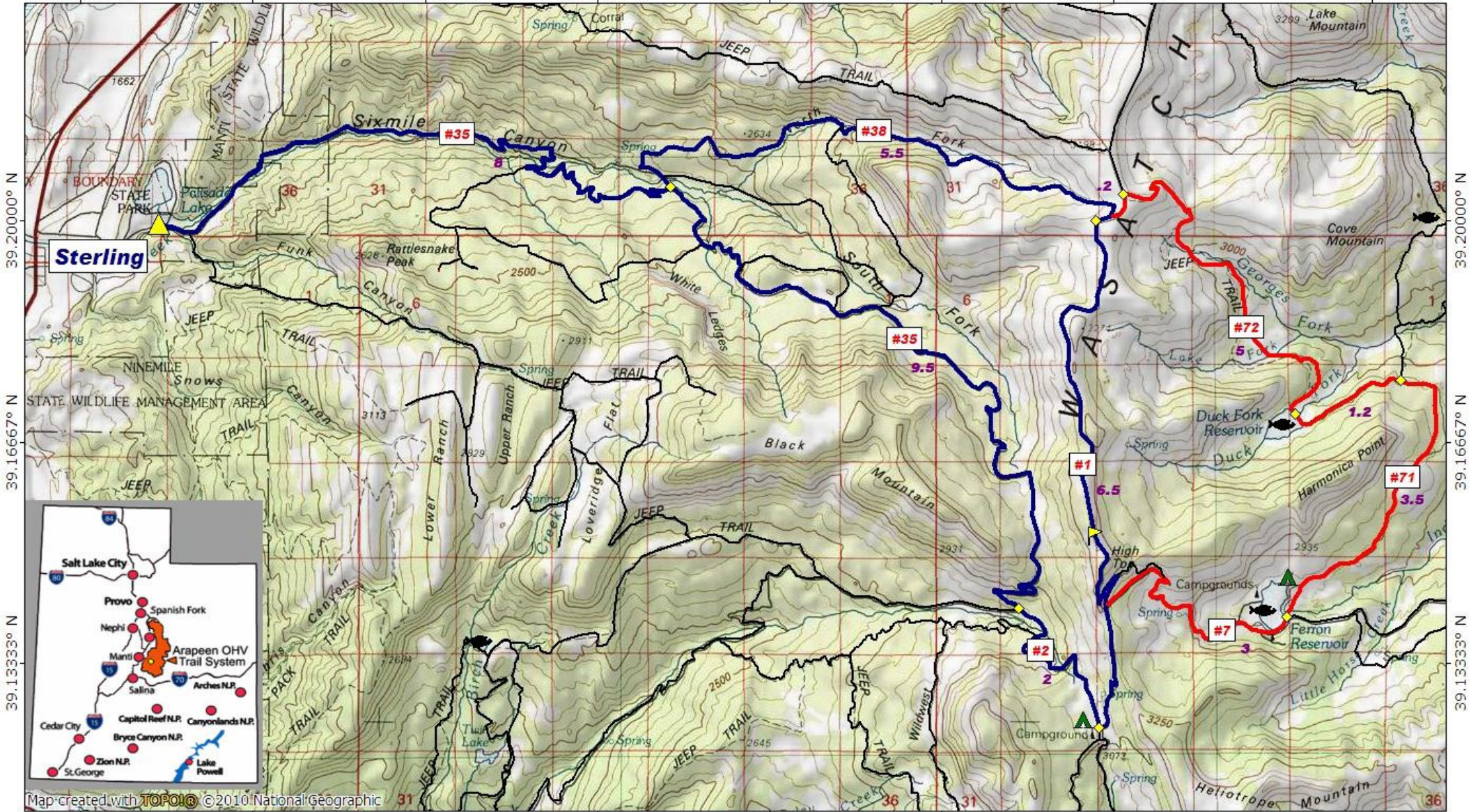


Palisade Ferron Loop, Elevation 10,900'

111.68333° W 111.65000° W 111.61667° W 111.58333° W 111.55000° W 111.51667° W 111.48333° W WGS84 111.43333° W



Map created with TOPO! © 2010 National Geographic

111.68333° W 111.65000° W 111.61667° W 111.58333° W 111.55000° W 111.51667° W 111.48333° W WGS84 111.43333° W

